

CRS SERIES

ALÜMİNYUM ROLLER SHUTTERS



TS EN 1028, Iso 9001, Iso 14001, Iso 18001, CE ve Gost-R



celiksanaaracustu @celiksanc co in celiksanc

www.celiksanc.com

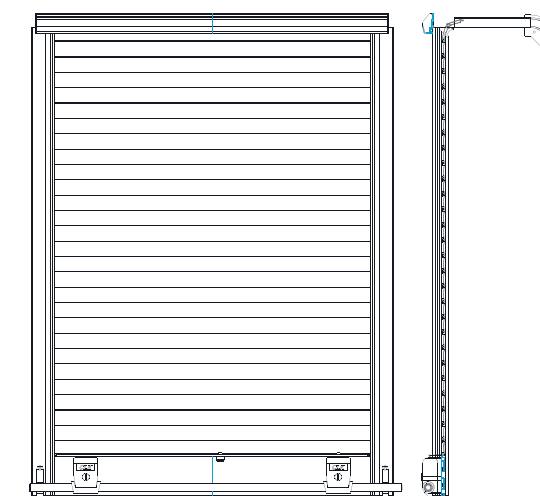
Ekrem Demirtaş Caddesi No: 37
İtob Organize Sanayi Bölgesi, 35868 Menderes / İzmir
+ 90 232 254 57 27 info@celiksanc.com

SINCE 1976



CELIKSAN

one brand



General Features

- High quality extruded aluminum with technical certification
- Matte anodized finish
- Waterproof and dustproof roller shutter wicks
- The shutters are manufactured in such a way that they can be applied to any type of cabinet or on-board equipment by using standard gaps that correspond to the desired width and length dimensions.
- PA6,6 plastic parts with high strength and hardness, resistant to thermal deformation
- Durable and long-lasting lock system with strong plastic feature
- Easy-to-install roller shutter and drum system
- Specially designed aluminum drum with spring installed and lockable
- Lock design with optimal ergonomics for convenient and easy locking
- Durable and long-lasting lock system with strong plastic feature
- 3-Stage wheel system with adjustable winding height

Options

- Matte Anodized, RAL 7024, RAL 1021, RAL 3000 and RAL 7035 color options
- Rail roller shutter system with drumless option
- Spring locking feature of the pipe type (With or without key)
- Special name dies can be applied for your company
- Daylight or white led lighting system with 12V or 24V option

Usage Dimensions

- Min. Width = 550 mm (21.5")
- Max. Width = 2100 mm (83")
- Max. Height = 2100 mm (83")

CRS SERIES



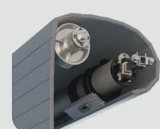
Company-Specific Logo Option



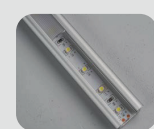
Color Options



Lock Options with and without a key



Drum and Drumless Option



LED Lighting Option



Drum